

# CYPRESS SYSTEMS

Over 700 veneer moisture detectors installed world-wide!

Introducing the...

## Evolution Series

**Most advanced features, greater control  
& highest return on your investment.**



Advanced moisture level settings include parameters for perimeter moisture masking on the veneer edges, moisture pocket size, and average moisture levels

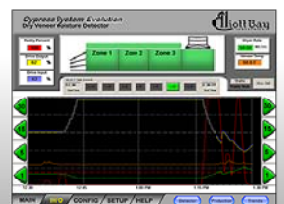
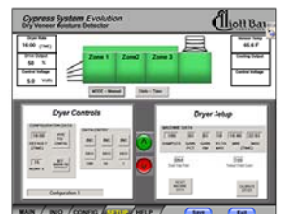
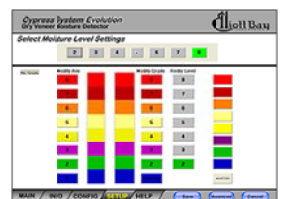
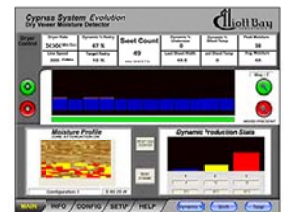
Real-Time data on the main screen shows the veneer moisture profile, sensor readings, and the main production stats.

Intuitive Setup Screens and the use of a large 15" touch-screen allow the user to navigate the menus with ease and make changes on the fly.

New Advanced Automatic Dryer Controls (ADC) provide more precise adjustments and more built in logic for optimum moisture distribution.

Part of the New ADC is the integration of Elliott Bay's Dryer Profiler Software, which allows the operator to analyze how well the system is performing and make adjustments based on real-time information.

- Increase Avg. MC%
- Reduce Redry Costs
- Improve Veneer Quality
- Reduce Glue Consumption
- Improve Drying Efficiency



To find out more, visit our website at [www.ellbay.com](http://www.ellbay.com) or call us at 1-206-762-6560



# CYPRESS SYSTEMS

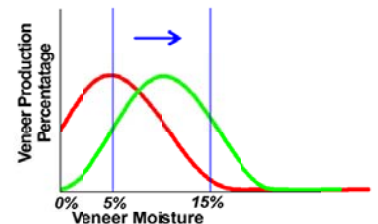
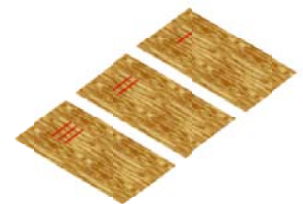
Over 700 veneer moisture detectors installed world-wide!

## THE CYPRESS ADVANTAGE

- Proven RF sensor head system, implemented by Elliott Bay over 20 years ago.
- Our experience in veneer moisture detection continually drives development of the best systems and service available today.
- The Cypress Evolution has the most features in the industry, allowing for complete moisture control.
- Our low maintenance design= low costs of ownership.
- The robust design ensures all the components will handle harsh environments, high temperatures, strong vibration, and a trouble free 24/7 service that Elliott Bay has built it's name on.

## THE BOTTOM LINE

- Increase your profits by up to 20% with proper veneer moisture detection and control.
  - Customers consistently report production increases from 5-20% immediately following the installation of a Cypress System from Elliott Bay.
- True, fast ROI that you can see.
  - The Cypress System will pay for itself in the early months of operation, not years, and real benefits can be seen within the first week!
- Increase capacity while using the same wood, and the same dryer.
  - Minimize your investment and Maximize your returns with the addition of a Cypress System Moisture detector.



Shifting production to the left demonstrates the increased drying capacity as veneers shift from Overdry to an operator controlled Moisture Content (15%)

## TECHNICAL

### A. Mechanical

1. Frame: Powder Coated Steel Sensor tray, and durable steel, sensor heads with ceramic coated sensor elements.
2. Transport: Existing belt conveyor system
3. Electrical and Ink Enclosures: Hoffman: rated Nema 12 or better.
5. Ink System: Pneumatic pump type system Air 5 CFM @ 60 PSI

### B. Electrical

1. Power Requirements: 110 VAC 50/60 Hz, 5 amps \*Step-Down transformer available
2. I/O System: 8 inputs per card (high speed digital conversion) 8 outputs per card (2-3 cards standard)  
Standard Outputs: 110 VAC Triac with optional DC Logic: Sink/Source
3. Memory: Battery back RAM or 1gb DDR RAM+ 512mb Flash on Cypress Evolution models.
4. Calibration: Fully Automatic
5. Serial Ports: 2 ports RS232
6. Ethernet Ports: 1 available on Cypress Evolution.

### C. Operational

1. Moisture Detection Range: From Fiber Saturation (25-35% MC) to 250% Dry weight basis
2. Scanning Area: 100 % of veneer surface
3. Line Speed: 1000 FPM (300 M/MIN)

To find out more, visit our website at [www.ellbay.com](http://www.ellbay.com) or call us at 1-206-762-6560

